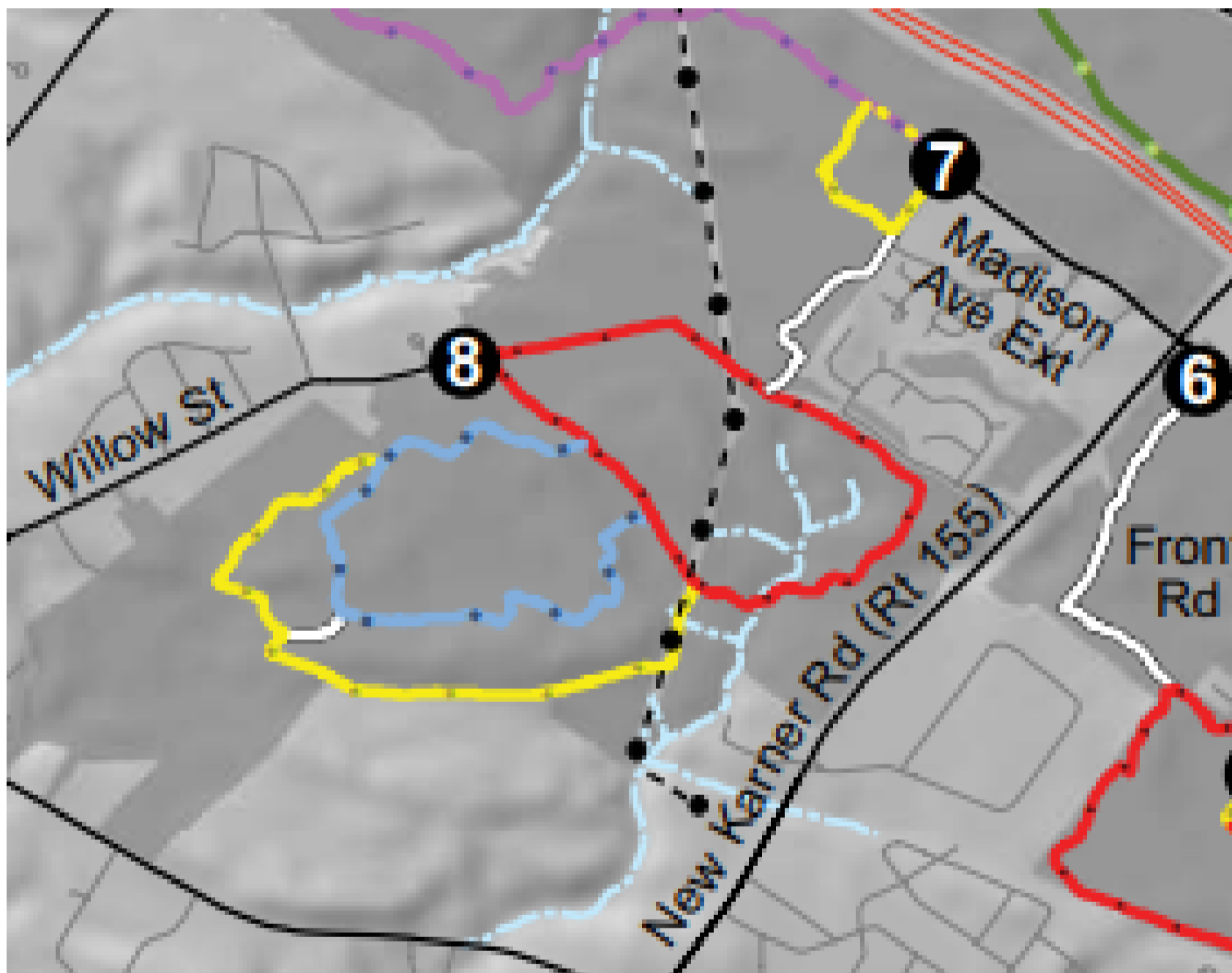


# Albany Pine Bush Preserve White, Red, Blue & Yellow



Let's start at the Kaikout Kill Barrens on the white trail .7 towards a diverse forest of pitch pine-scrub oak barrens, and native prairies adorning rolling sand dunes including the Great Dune on the Red Trail 1.8. We will take it counterclockwise to the Blue Trail 1.4 staying on the blue trail until the yellow loop right then after about a 1/2 turn left on white back to a right on blue .5. soon we'll be back on blue, make a right and return to our starting point for a total of about 4.5 miles.



Directions:

<https://maps.app.goo.gl/5eJxch9yEaPX5sbG9>

Here is a link to the PDF of all the trails at Albany Pine Bush Preserve:

[https://albanypinebush.org/corecode/uploads/document6/uploaded\\_pdfs/corecode/APB.interior-ALL2018\\_23.pdf](https://albanypinebush.org/corecode/uploads/document6/uploaded_pdfs/corecode/APB.interior-ALL2018_23.pdf)