

# St Sebastian River State Park



Location: Fellsmere

With vast open grassy forests of Long Leaf Pines with miles of trails you can refer to the sign for the color trails. We did 6 mi of the Green Trail, next trip the Yellow maybe!

We drove west thru Fellsmere and had an amazing view of time gone by. It was like going back in time! We finally made it to the park entrance and were the only car parked at the welcome center (we later found it was closed).



We donned our packs and sipped some water as we headed out into the pines and live oaks offering us shade on the well defined trail.





It was a crisp morning about 58 degrees and the sky was blue. We walked a few miles and started to see animals in the distance, they weren't really animals, they were our expectations of animals. We saw a great owl on top of a broken tree, a giant fox in the distant field, and heard the hooded woodpecker in the distance!



After a few miles we saw a sign to divert to a trail called Turkey Loop, we decided to save that for our next trip and proceeded. We saw the remnants of wild boar activity, they tore up our path to such an extent it became hard to walk on. We continued on the uneven and rutted path to the high tension power lines turning precisely at the well marked (and cut) arrows that pointed us in the correct direction.





This was the large owl or bird sitting on a stump in the distance.



PRESERVE

# PARK OFFICE HOURS MONDAY-THURSDAY

8AM - 5PM

PRIMITIVE TENT CAMPING  
RESERVATIONS 321.953.5005

VISITORS CENTER  
FRI, SAT & SUN  
10:00 - 4:30

**Emergency — Call 911**

**St. Sebastian River Preserve  
State Park**

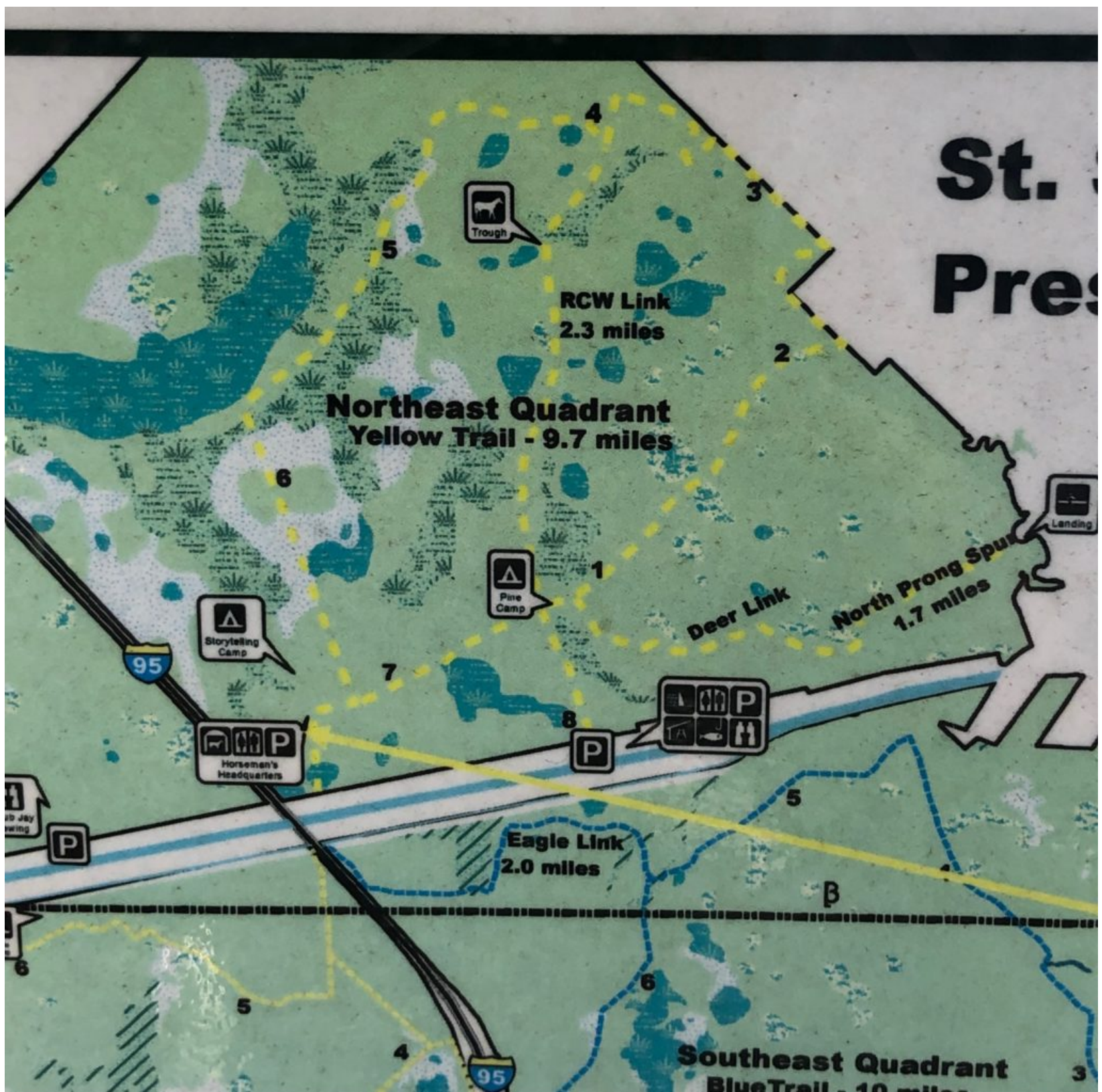
1000 Butler Preserve Drive, Fort Pierce, Florida 32948  
Park Hours 8 am - 5 pm

**After Hours Park Ranger  
772-202-8944**

<b>Park Office</b>	321-953-5005
<b>Visitor Center</b>	321-953-5004
<b>Park Manager</b>	772-508-4075

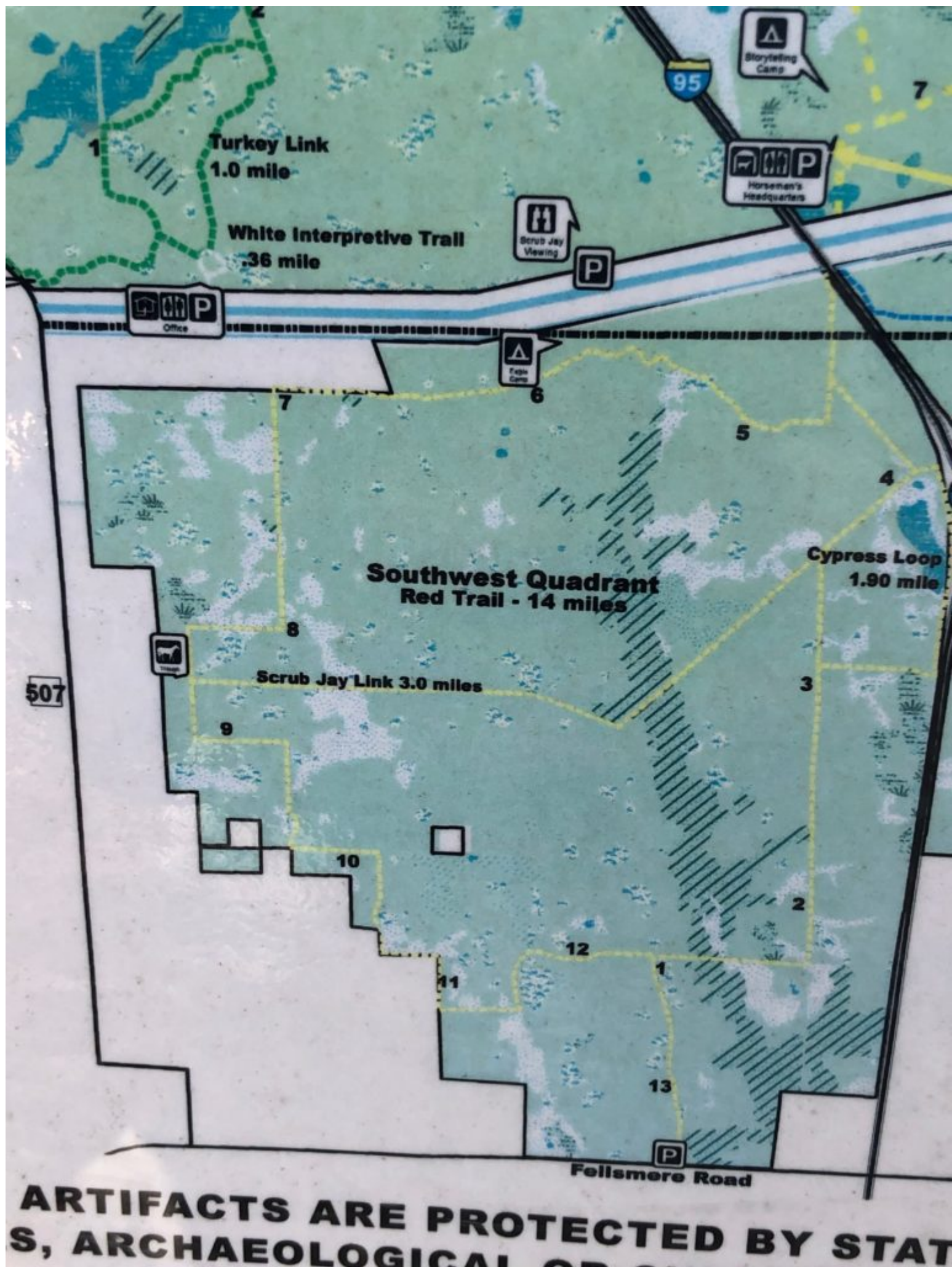
Sebastian River Medical Center 13685 US 1, Sebastian, FL 32958 772-569-3186  
Palm Bay Hospital 1425 Malabar Road SE, Palm Bay, FL 32907 321-434-8000





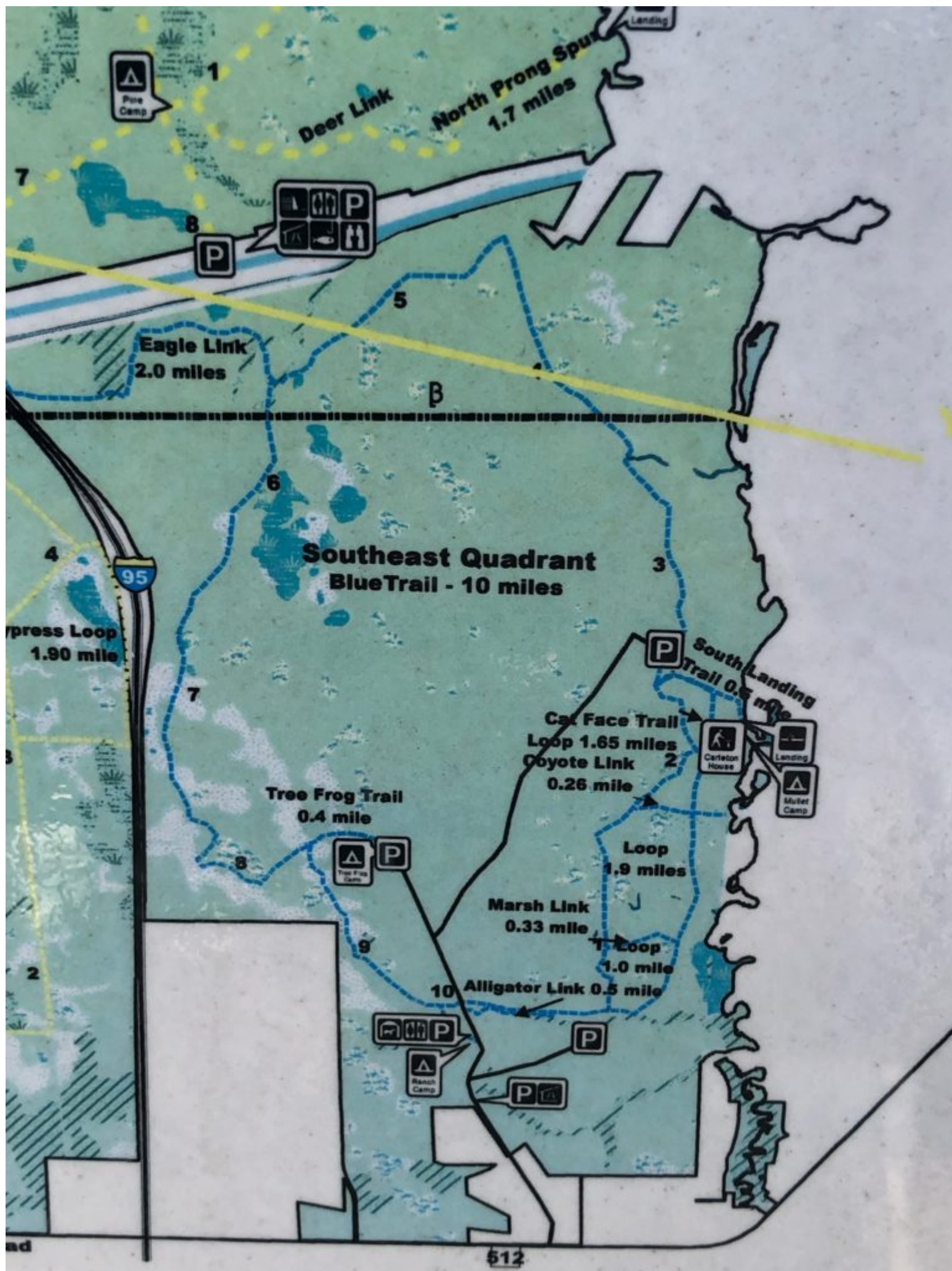
Yellow Trail 9.7 miles





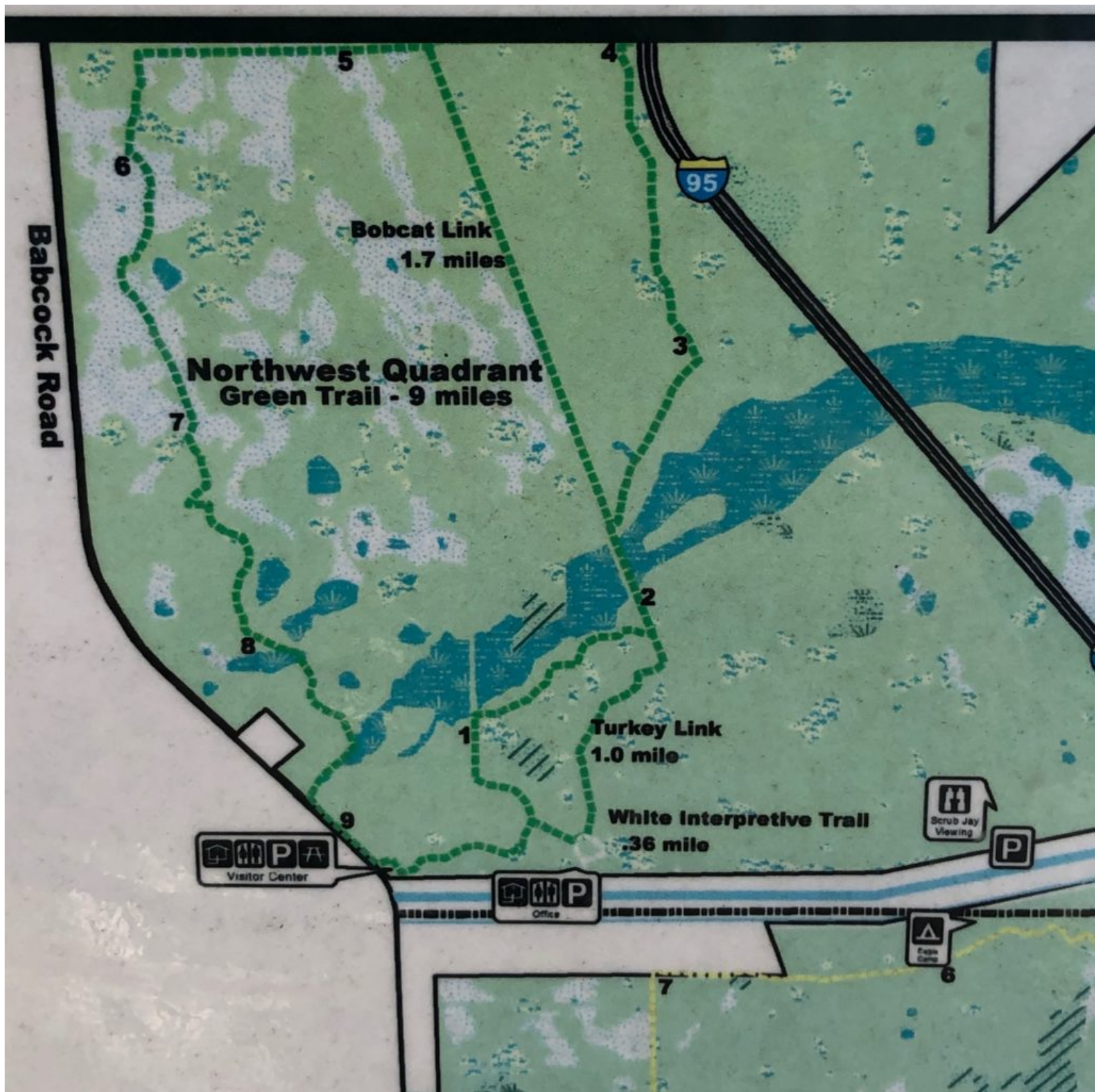
Red Trail 14 Miles





Blue Trail 10 Miles





Green Trail 9 miles

After we finished our lunch we headed back thru Fellsmere to hike the new bridge trail that crosses interstate 95.





At the very west end of the Trail we found a path that led to this:





Intrigued, we followed paths that led from one gigantic game to another!





It turned out to be a 3 mile course that runs on trails called the Florida Tech Challenge Course. It's a military spec Marine Obstacle Course, Air Assault Course, and some additional challenges along the way.

It's a must see if you're in the area!